

BULK SOLIDS HANDLING EQUIPMENT

SCREW CONVEYOR ACCESSORIES 螺旋输送机配件

Intermediate Hanger Bearing XL Series XL系列中间悬挂总成

XL 系列中间吊轴是螺旋喂料机中必不可少的连接件，是带自润滑衬套的吊架。
XL series of intermediate shaft is screw feeder hanging essential connection is with self-lubricating liner hanger.



XLR

性能-特性

- 材质：铝合金
- 适应于水泥，石灰和类似粉末

Performance & Technical Features - Benefits

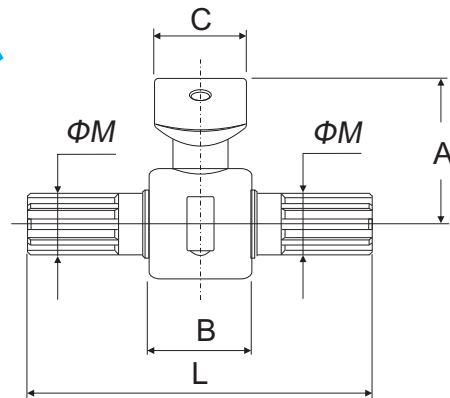
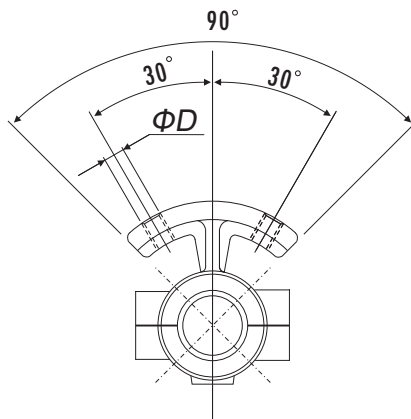
- Material: Aluminum alloy
- Suitable for cement, lime and similar powders



Code 代号

X L R 0 4 0 B

轴杆 Ø Shaft	喂料机 Ø Feeder
040=Ø40mm	15=Ø 168 20=Ø 219 17=Ø 193 25=Ø 273 30=Ø 323



FOR:ES Screw conveyor

连接尺寸 CONNECTION SIZE

Part # 型号	Φ Shaft 轴杆	Φ Feeder 适用喂料机	A	B	C	D	M DIN 5482	L	齿数 Number of teeth	Kg
XLR040B015	40	ES 168	80	55	51	M14	40x36	245	20	3.5
XLR040B017	40	ES 193	92.5	55	51	M14	40x36	245	20	3.5
XLR040B020	40	ES 219	105.5	55	51	M14	40x36	245	20	3.9
XLR040B025	40	ES 273	132.5	55	51	M14	40x36	245	20	4.5
XLR040B030	40	ES 323	157.5	55	51	M14	40x36	245	20	5.0
KLR040B015	40	ES 168	80	55	51	M14	40x36	245	19	3.5
KLR040B020	40	ES 219	105.5	55	51	M14	40x36	245	19	3.9
KLR040B025	40	ES 273	132.5	55	51	M14	40x36	245	19	4.5
KLR040B030	40	ES 323	157.5	55	51	M14	40x36	245	19	5.0

Dimensions in mm